

# WANGARATTA EDUCATION SEMINAR

THURSDAY

JULY  
31

5:30–7:00PM

Find out about becoming a  
teacher and local opportunities

- Hear from local school principals and early childhood leaders.
- Listen to representatives from institutions about course options, including La Trobe, Charles Sturt University & GOTAFE.
- Ask questions of the panel and get personalised advice from education leaders, providers and CUC-OM staff

This is a fantastic opportunity to take that step into a career in education.



Dave Armstrong  
Principal  
Wangaratta High



Kristy Mullins  
Principal  
Wangaratta  
West Primary



Jade Salmon  
Early Childhood  
Coordinator  
Rural City of  
Wangaratta



Dr Steve Murphy  
La Trobe University  
Director of Rural &  
Regional  
Education  
Engagement



Trish Briggs  
Charles Sturt  
University  
Course Director  
Bachelor Ed K-12  
/ Lecturer



Fiona Corish  
GOTAFE  
Education Manager,  
Community & Early  
Childhood



Mark van Bergen  
CUC-OM Manager  
and ex-principal  
and teacher

Facilitator



Country  
Universities  
Centre  
OVENS MURRAY

Country Universities Centre - Ovens Murray (Wangaratta)  
Building F, GOTAFE Docker St Campus, Wangaratta (Directly  
behind the town library)

To register click [HERE](#)  
or scan the QR code

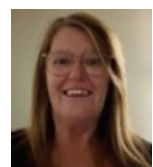


# Panel Speakers

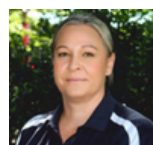
**Dr. Steve Murphy** presents an exploration of the various pathways into teaching available to members of rural communities. Using La Trobe initial teacher education courses as an example, the presentation covers teacher qualifications, entry requirements, course components, and career options at completion. Steve will also discuss La Trobe's Nexus programs, a suite of award-winning employment-based pathways into teaching that allow students to earn and learn on-the-job, while studying to be a teacher. He is the Director of Rural and Regional Education Engagement with La Trobe University's School of Education. Steve researches rural education and teacher preparation for rural and regional communities. Steve is an advocate for the strengths and opportunities available to teachers working in rural areas. Prior to his academic career, Steve worked as a teacher and school leader in rural secondary and primary schools.



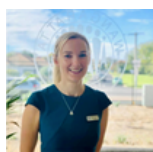
**Trish Briggs** commenced as an academic at Charles Sturt in 2012. She is the Course Director for the Bachelor of Education (K-12) (Albury and Wagga). Trish's research focuses on student and teacher wellbeing, and she has a particular interest in early career teachers experiences in the first five years of teaching. Trish enjoys talking to prospective students about a career in teaching.



**Fiona Corish** is a highly dedicated and experienced professional serving as the Education Manager for Community & Early Childhood at GOTAFE. With an impressive tenure of eight years at GOTAFE, she began her journey as a teacher in Early Childhood and has since advanced to manage a comprehensive portfolio that includes Community Services, Early Childhood, School-based Education Support, Individual Support, and Youth Futures. A true advocate for VET (Vocational Education and Training) education, Fiona is deeply passionate about its transformative impact on communities. With over three decades of experience in leading teams and driving change within both Early Childhood and VET Education sectors, she firmly believes in the profound influence further learning can have on students, employers, and the wider community.



**Jade Salmon** Jade's current role is Early Childhood Coordinator at The Rural City of Wangaratta. With over two decades of experience in early childhood education, Jade has dedicated her career to nurturing the minds and hearts of young children. Beginning her journey as a trainee, steadily advancing through the field completing her Certificate III and Diploma in Children's Services. Her unwavering passion for early learning and emotional wellbeing for children has guided her through many years of hands-on experience, where she has witnessed firsthand the critical role early support plays in shaping resilient, confident young people. Currently nearing the completion of her Master's degree in Counselling, to expanding her impact beyond the classroom.



**Kristy Mullins** Bachelor of Education (Hons), Master of School Leadership. Kristy is Principal at Wangaratta West Primary School. Kristy is a passionate professional with a strong understanding of the diversity of schools through her work as a teacher and leader at two large metropolitan Melbourne schools, leadership of a regional primary school and interacting with principals across her network.



**Dave Armstrong** is the Executive Principal at Wangaratta High School. He has a teaching background in Outdoor Education, Business Education and Humanities. He is an experienced education leader, having worked across the independent and international school sectors before joining the Victorian Department of Education. He has worked in the Northern Territory, NSW and overseas. Prior to commencing at Wangaratta High School Dave was the Principal of Port Vila International School in Vanuatu, and the Deputy Principal of The Scots School Albury immediately prior. Dave's two children attend the High School.



## Facilitator

**Mark van Bergen** is the Centre Manager of CUC Ovens Murray. Mark is passionate about inclusive education, career development and lifelong learning. He has over twenty years' teaching experience and leadership in schools, predominantly in North East Victoria coupled with experiences in Melbourne and China. He understands personally the challenges of studying remotely, having completed his Masters of Educational Research by distance learning.



**Country Universities Centre**  
OVENS MURRAY

Country Universities Centre - Ovens Murray (Wangaratta)  
Building F, GOTAFE Docker St Campus, Wangaratta (Directly behind the town library)

To register click [HERE](#)  
or scan the QR code

